

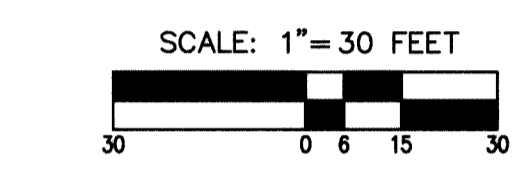
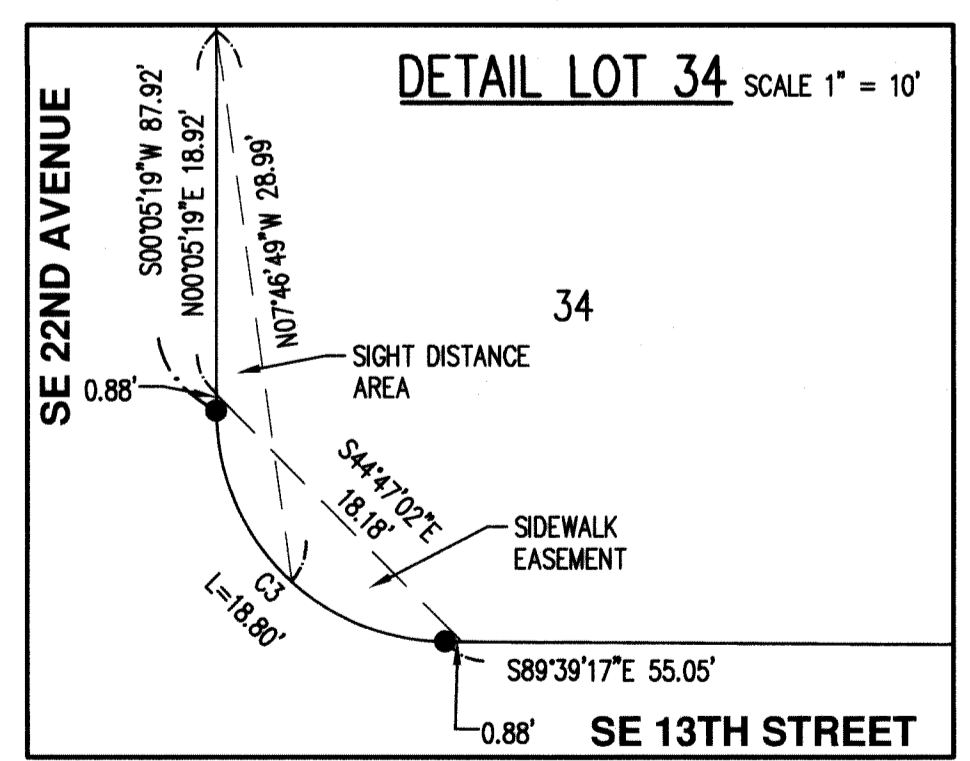
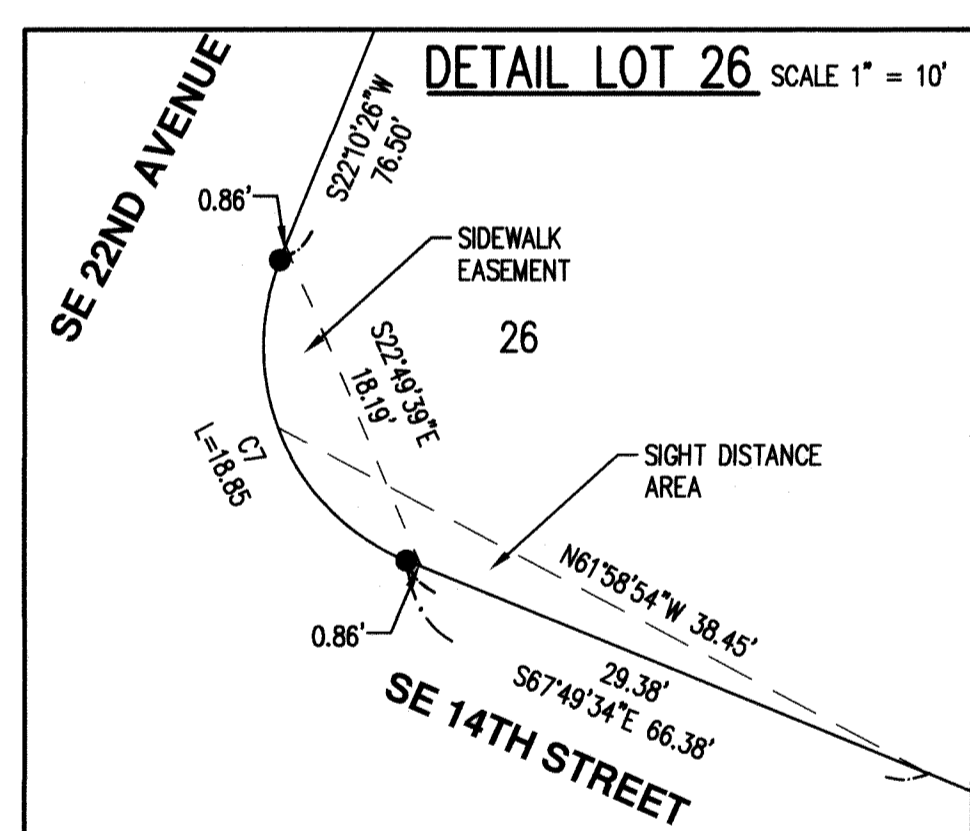
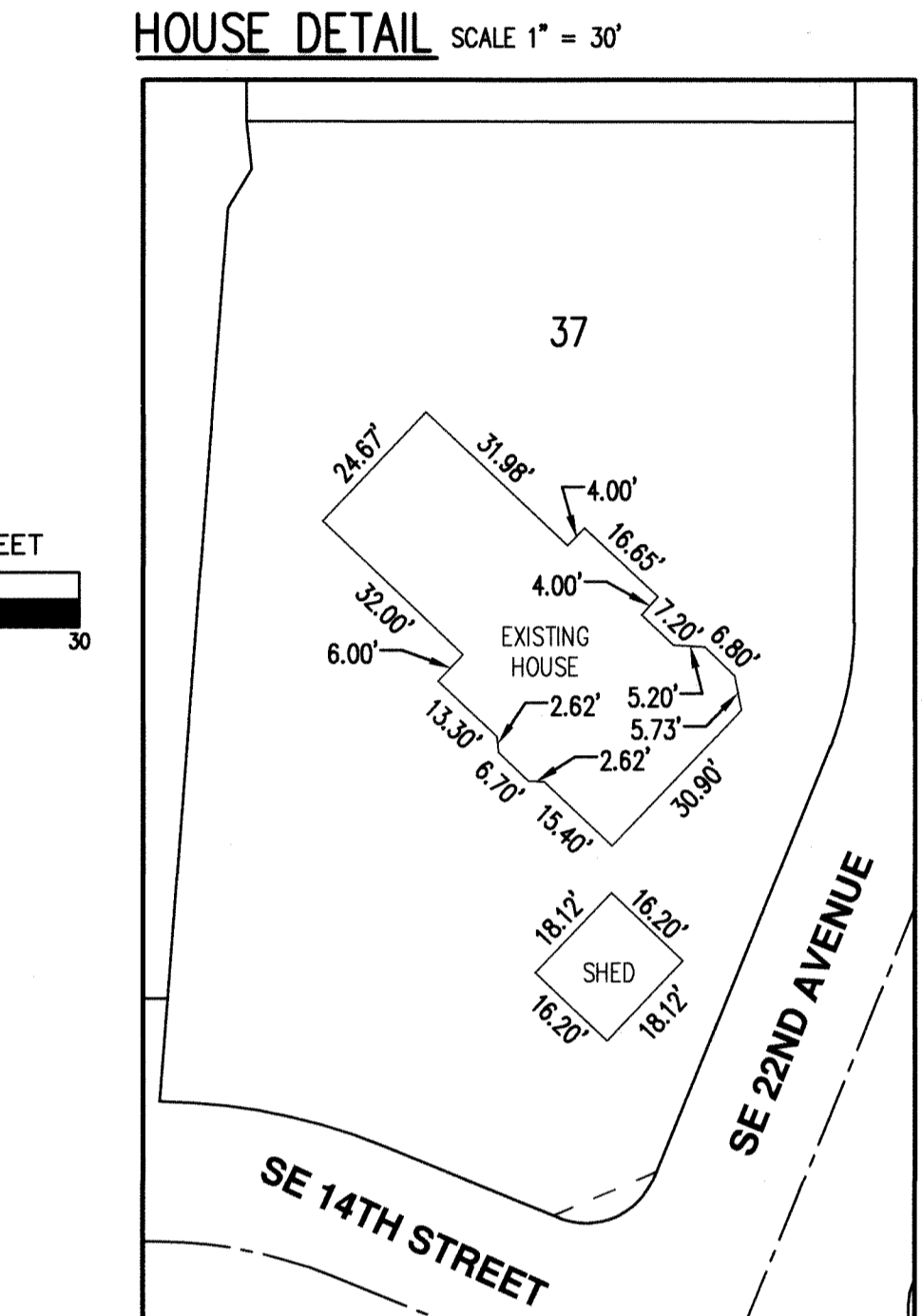
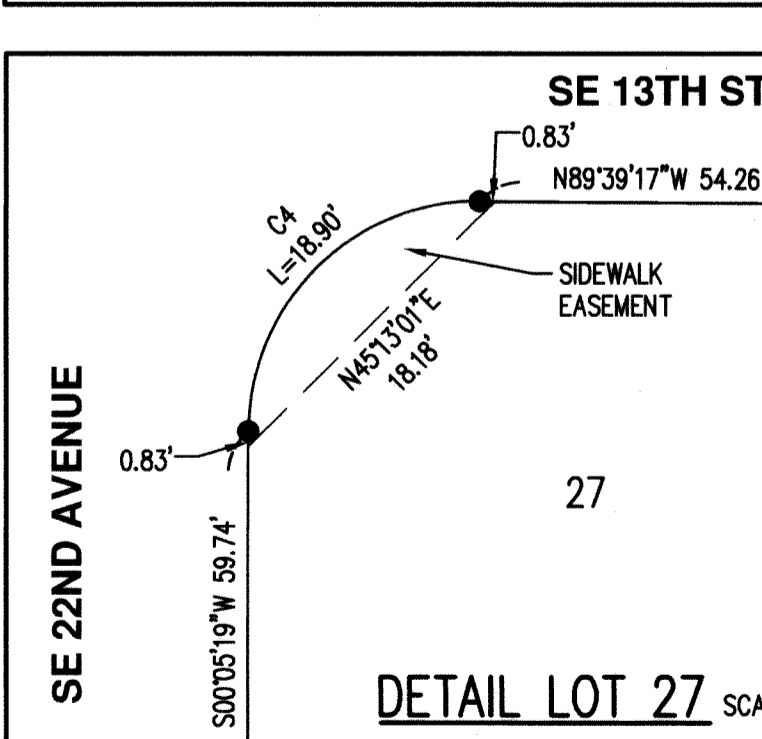
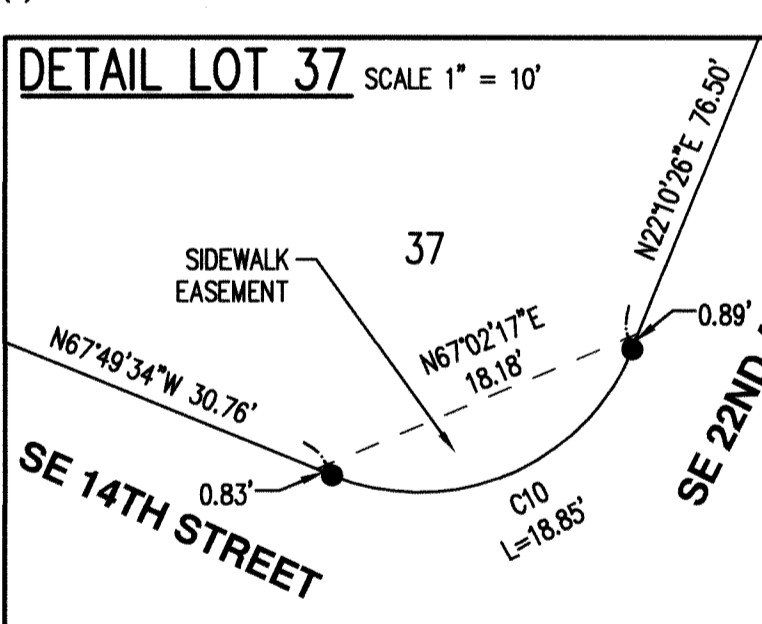
QUAIL RESERVE 2

PRELIMINARILY APPROVED AS EASTBROOK PARK
 LOCATED IN THE NW 1/4 OF THE SW 1/4 OF SECTION 1,
 TOWNSHIP 3 NORTH, RANGE 2 EAST, W.M.,
 CITY OF BATTLE GROUND, CLARK COUNTY, WASHINGTON
 FEBRUARY, 2020

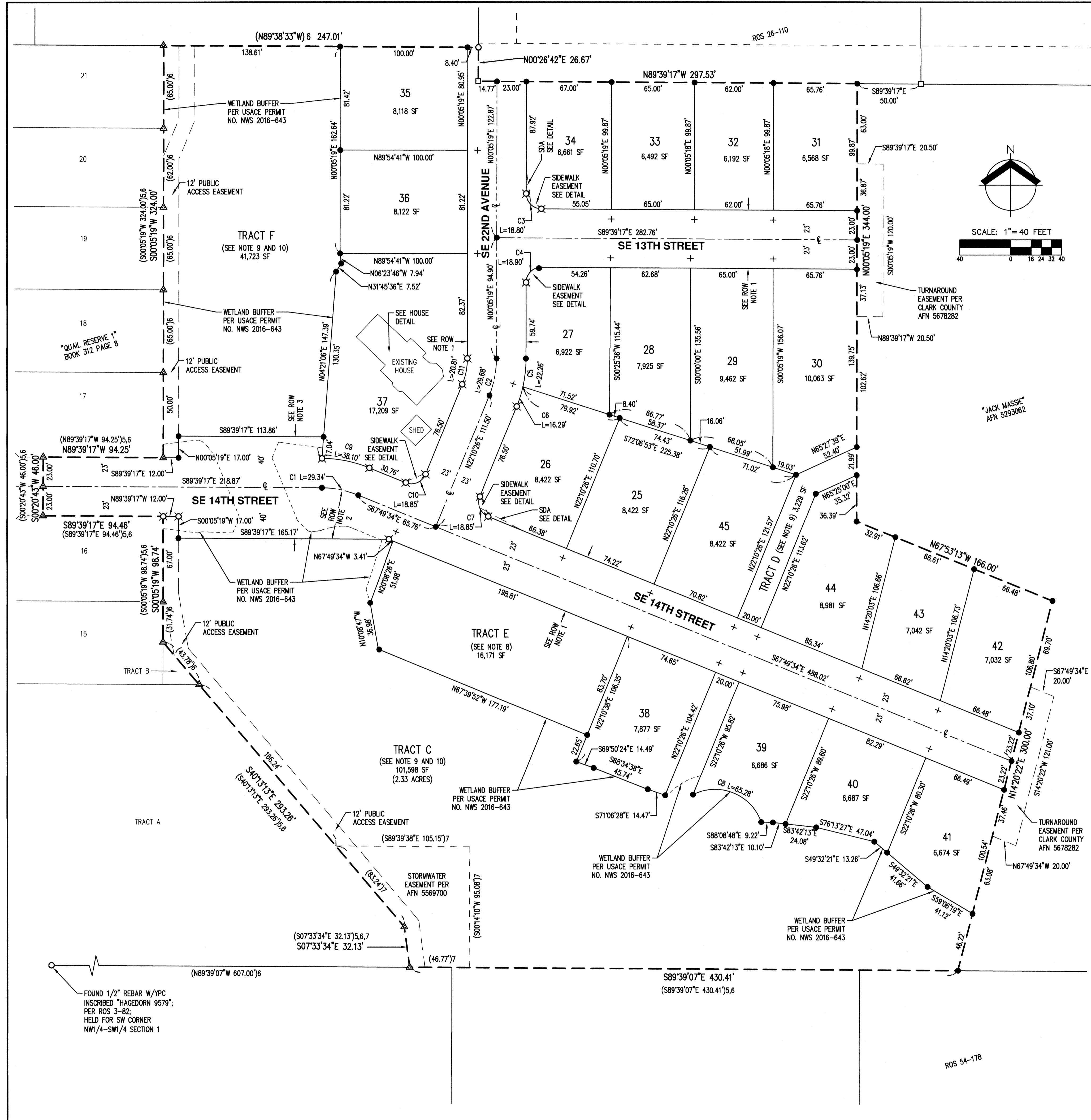
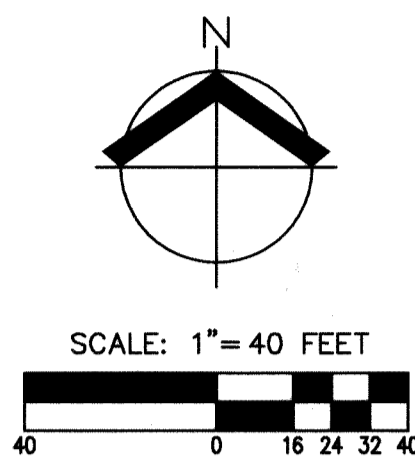
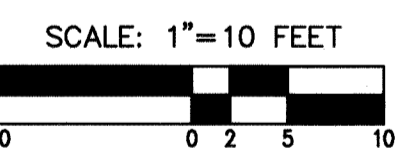
CURVE TABLE			
CURVE	RADIUS	DELTA	LENGTH
C1	77.00'	21°49'43"	29.34'
C2	77.00'	22°05'07"	29.68'
C3	12.00'	89°44'36"	18.80'
C4	12.00'	90°15'24"	18.90'
C5	100.00'	12°45'12"	22.26'
C6	100.00'	9°19'55"	16.29'
C7	12.00'	90°00'00"	18.85'
C8	38.20'	97°54'50"	65.28'
C9	100.00'	21°49'43"	38.10'
C10	12.00'	90°00'00"	18.85'
C11	54.00'	22°05'07"	20.81'

- LEGEND**
- SET 1/2" X 24" REBAR WITH YELLOW PLASTIC CAP INSCRIBED "AKS ENGR 34127"
 - + SET BRASS SCREW WITH BRASS WASHER INSCRIBED "AKS ENGR 34127" ON EXTENSION OF LOT LINE IN THE CURB AT A DISTANCE OF 7.70' UNLESS NOTED OTHERWISE IN CURB SCREW TABLE
 - ⊗ SET BRASS SCREW WITH BRASS WASHER INSCRIBED "AKS ENGR 34127"
 - ▲ FOUND 1/2" REBAR WITH YELLOW PLASTIC CAP INSCRIBED "AKS ENGR 34127"; PER PLAT "QUAIL RESERVE 1" BOOK 312 PAGE 8; HELD (TIED 11/2018)
 - FOUND 1/2" REBAR WITH YELLOW PLASTIC CAP INSCRIBED "HAGEDORN 9579"; AS SHOWN ROS 3-82; HELD UNLESS NOTED OTHERWISE (TIED 09/2013)
 - FOUND 1/2" REBAR WITH YELLOW PLASTIC CAP INSCRIBED "MINISTER 12563"; PER ROS 26-110; HELD UNLESS NOTED OTHERWISE (TIED 09/2013)
 - ⊙ FOUND MONUMENT AS NOTED; HELD UNLESS NOTED OTHERWISE (TIED 09/2013)
 - AFN AUDITOR'S FILE NUMBER
 - CL CENTERLINE
 - LCR LAND CORNER RECORD
 - ROS RECORD OF SURVEY
 - ROW RIGHT-OF-WAY
 - SDA SIGHT DISTANCE AREA (SEE PLAT NOTE 5)
 - SF SQUARE FEET
 - W/YPC WITH YELLOW PLASTIC CAP
 - USACE US ARMY CORPS OF ENGINEERS

- REFERENCES**
- (1) RECORD DATA PER ROS BOOK 3 PAGE 82
 - (2) RECORD DATA PER ROS BOOK 26 PAGE 110
 - (3) RECORD DATA PER ROS BOOK 27 PAGE 21
 - (4) RECORD DATA PER ROS BOOK 55 PAGE 001
 - (5) RECORD DATA PER AFN 5448091
 - (6) RECORD DATA PER PLAT "QUAIL RESERVE 1" BOOK 312 PAGE 8
 - (7) RECORD DATA PER AFN 5569700



CURB SCREW TABLE	
COMMON LOT LINE	DISTANCE
33/34	7.90'



- RIGHT-OF-WAY NOTES**
- 46.00 FOOT RIGHT-OF-WAY DEDICATED TO THE CITY OF BATTLE GROUND WITH THIS PLAT.
 - VARIABLE WIDTH RIGHT-OF-WAY DEDICATED TO THE CITY OF BATTLE GROUND WITH THIS PLAT.
 - 80.00 FOOT RIGHT-OF-WAY DEDICATED TO THE CITY OF BATTLE GROUND WITH THIS PLAT.



JOB NAME: QUAIL RESERVE PH 2	AKS ENGINEERING & FORESTRY, LLC 9600 NE 126TH AVE, STE 2520 VANCOUVER, WA 98682 360.882.0419 WWW.AKS-ENG.COM
JOB NUMBER: 3772	
DRAWN BY: CH	
CHECKED BY: CAB	
DRAWING NO.: 3772CPLAT2	ENGINEERING · SURVEYING · NATURAL RESOURCES FORESTRY · PLANNING · LANDSCAPE ARCHITECTURE