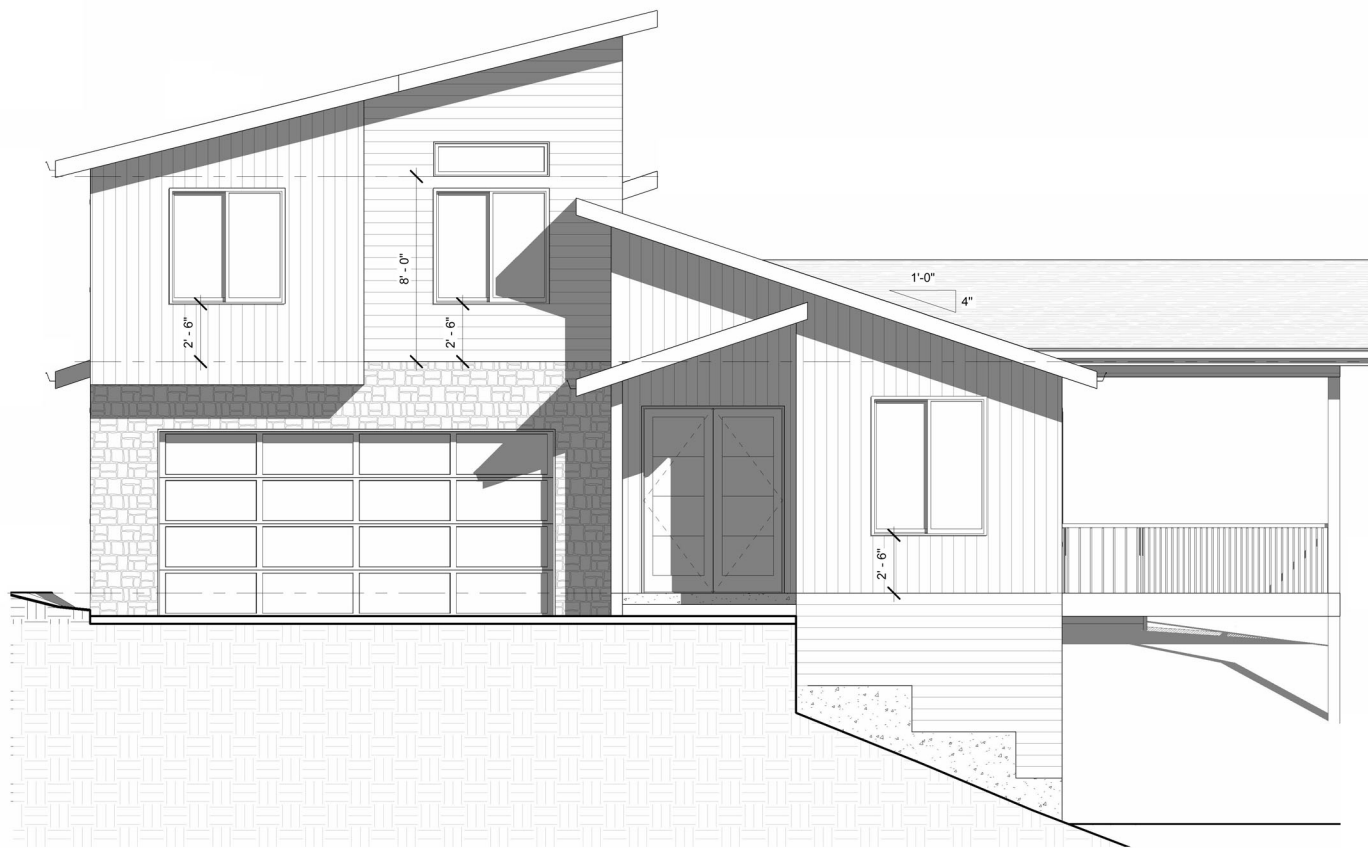




NORTHWEST
HOME BUILDER GROUP

Lot 9 University Park
2,710 sq ft



360-521-1973



WWW.NWHOMEBUILDERGROUP.COM

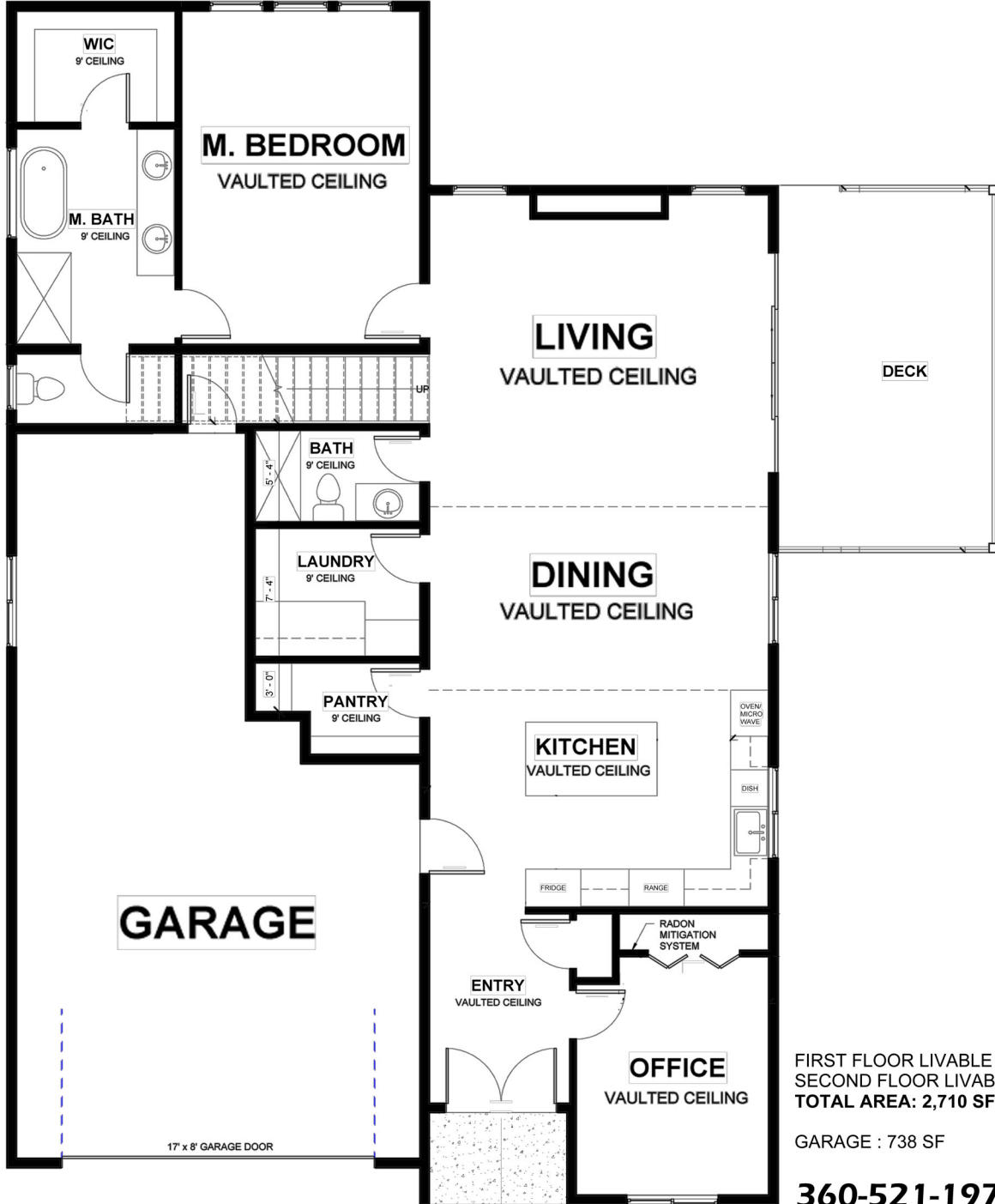
RENDERINGS, PLANS, SPECIFICATIONS, TERMS, CONDITIONS AND STATEMENTS CONTAINED IN THIS BROCHURE ARE PROPOSED ONLY. NW HOME-BUILDER GROUP RESERVES THE RIGHT TO MODIFY, REVISE OR WITHDRAW ANY OR ALL OF SAME IN ITS SOLE DISCRETION AND WITHOUT PRIOR NOTICE.





NORTHWEST
HOME BUILDER GROUP

Lot 9 University Park
2,710 sq ft



FIRST FLOOR LIVABLE AREA : 1,740 SF
SECOND FLOOR LIVABLE AREA: 970 SF
TOTAL AREA: 2,710 SF

GARAGE : 738 SF

360-521-1973



WWW.NWHOMEBUILDERGROUP.COM

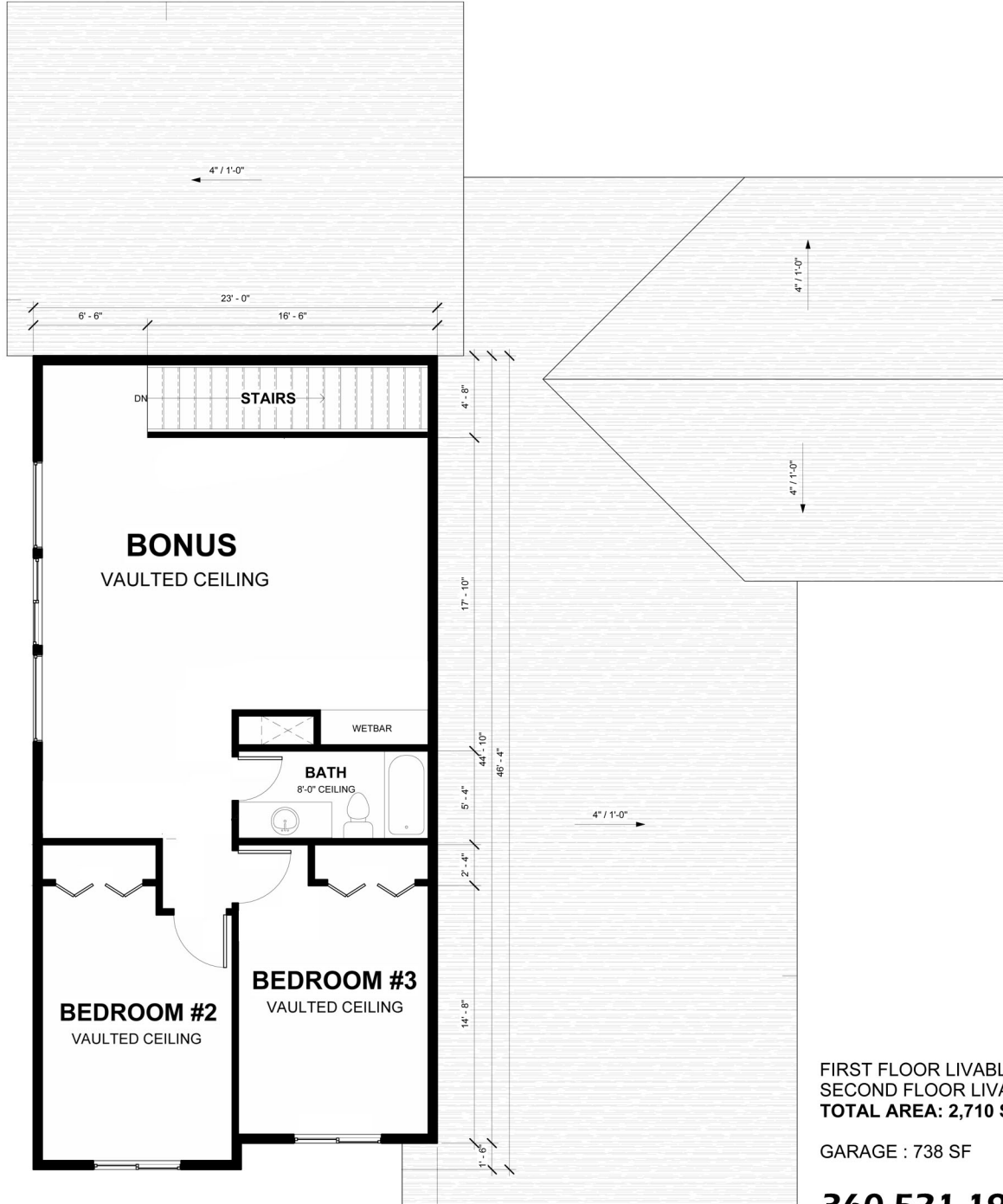
RENDERINGS, PLANS, SPECIFICATIONS, TERMS, CONDITIONS AND STATEMENTS CONTAINED IN THIS BROCHURE ARE PROPOSED ONLY. NW HOME-BUILDER GROUP RESERVES THE RIGHT TO MODIFY, REVISE OR WITHDRAW ANY OR ALL OF SAME IN ITS SOLE DISCRETION AND WITHOUT PRIOR NOTICE.





NORTHWEST
HOME BUILDER GROUP

Lot 9 University Park 2,710 sq ft



FIRST FLOOR LIVABLE AREA : 1,740 SF
SECOND FLOOR LIVABLE AREA: 970 SF
TOTAL AREA: 2,710 SF

GARAGE : 738 SF

360-521-1973



WWW.NWHOMEBUILDERGROUP.COM

RENDERINGS, PLANS, SPECIFICATIONS, TERMS, CONDITIONS AND STATEMENTS CONTAINED IN THIS BROCHURE ARE PROPOSED ONLY. NW HOME-BUILDER GROUP RESERVES THE RIGHT TO MODIFY, REVISE OR WITHDRAW ANY OR ALL OF SAME IN ITS SOLE DISCRETION AND WITHOUT PRIOR NOTICE.

