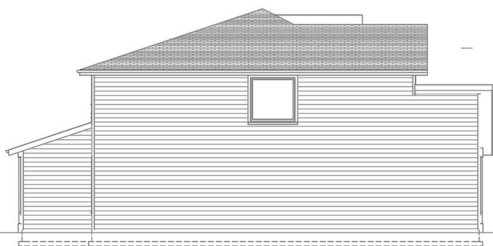




**NORTHWEST**  
HOME BUILDER GROUP

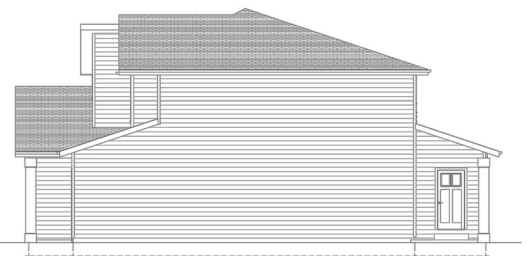
**Lot 6 Ryleys Place**  
**2,408 sq ft**



LEFT ELEVATION - RESIDENCE



REAR ELEVATION - RESIDENCE



RIGHT ELEVATION - RESIDENCE

**360-521-1973**



[WWW.NWHOMEBUILDERGROUP.COM](http://WWW.NWHOMEBUILDERGROUP.COM)

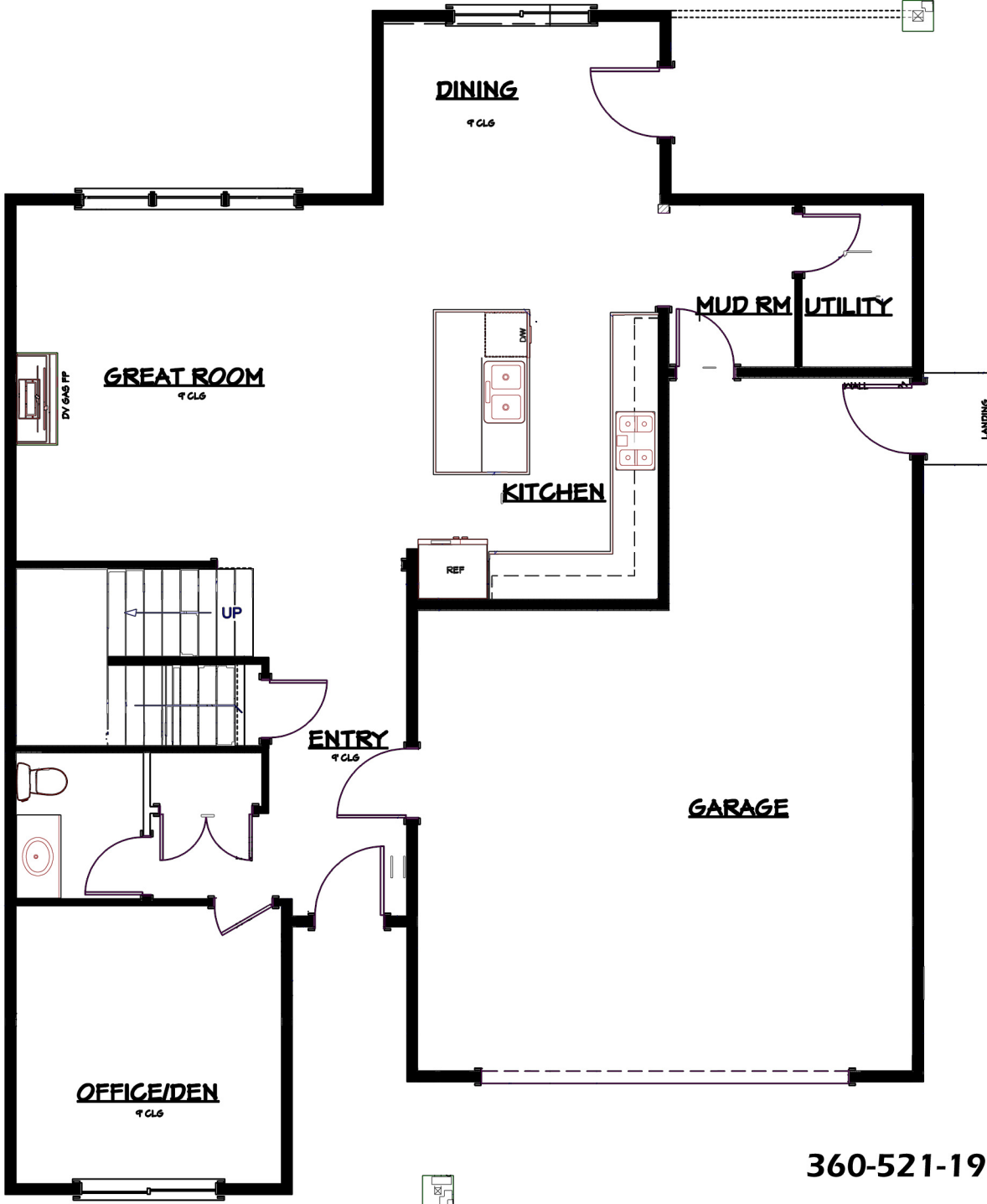
RENDERINGS, PLANS, SPECIFICATIONS, TERMS, CONDITIONS AND STATEMENTS CONTAINED IN THIS BROCHURE ARE PROPOSED ONLY. NW HOME-BUILDER GROUP RESERVES THE RIGHT TO MODIFY, REVISE OR WITHDRAW ANY OR ALL OF SAME IN ITS SOLE DISCRETION AND WITHOUT PRIOR NOTICE.





**NORTHWEST**  
HOME BUILDER GROUP

Lot 6 Ryleys Place  
2,408 sq ft



360-521-1973



[WWW.NWHOMEBUILDERGROUP.COM](http://WWW.NWHOMEBUILDERGROUP.COM)

RENDERINGS, PLANS, SPECIFICATIONS, TERMS, CONDITIONS AND STATEMENTS CONTAINED IN THIS BROCHURE ARE PROPOSED ONLY. NW HOME-BUILDER GROUP RESERVES THE RIGHT TO MODIFY, REVISE OR WITHDRAW ANY OR ALL OF SAME IN ITS SOLE DISCRETION AND WITHOUT PRIOR NOTICE.





**NORTHWEST**  
HOME BUILDER GROUP

**Lot 6 Ryleys Place**  
**2,408 sq ft**



360-521-1973



[WWW.NWHOMEBUILDERGROUP.COM](http://WWW.NWHOMEBUILDERGROUP.COM)

RENDERINGS, PLANS, SPECIFICATIONS, TERMS, CONDITIONS AND STATEMENTS CONTAINED IN THIS BROCHURE ARE PROPOSED ONLY. NW HOME-BUILDER GROUP RESERVES THE RIGHT TO MODIFY, REVISE OR WITHDRAW ANY OR ALL OF SAME IN ITS SOLE DISCRETION AND WITHOUT PRIOR NOTICE.

