



**NORTHWEST**  
HOME BUILDER GROUP

Lot 4 on 94th Ave  
2,624 sq ft  
1,876 + 748 sq ft



FRONT ELEVATION



360-521-1973



[WWW.NWHOMEBUILDERGROUP.COM](http://WWW.NWHOMEBUILDERGROUP.COM)

RENDERINGS, PLANS, SPECIFICATIONS, TERMS, CONDITIONS AND STATEMENTS CONTAINED IN THIS BROCHURE ARE PROPOSED ONLY. NW HOME-BUILDER GROUP RESERVES THE RIGHT TO MODIFY, REVISE OR WITHDRAW ANY OR ALL OF SAME IN ITS SOLE DISCRETION AND WITHOUT PRIOR NOTICE.





**NORTHWEST**  
HOME BUILDER GROUP

**Lot 4 on 94th Ave**  
**2,624 sq ft**  
**1,876 + 748 sq ft**



1ST FLOOR PLAN  
SCALE 1/4"=1'-0"

AREA	1ST FLOOR	2ND FLOOR	TOTAL
	1876 SF	748 SF	2624 SF

AREA 748 SF

**360-521-1973**



[WWW.NWHOMEBUILDERGROUP.COM](http://WWW.NWHOMEBUILDERGROUP.COM)

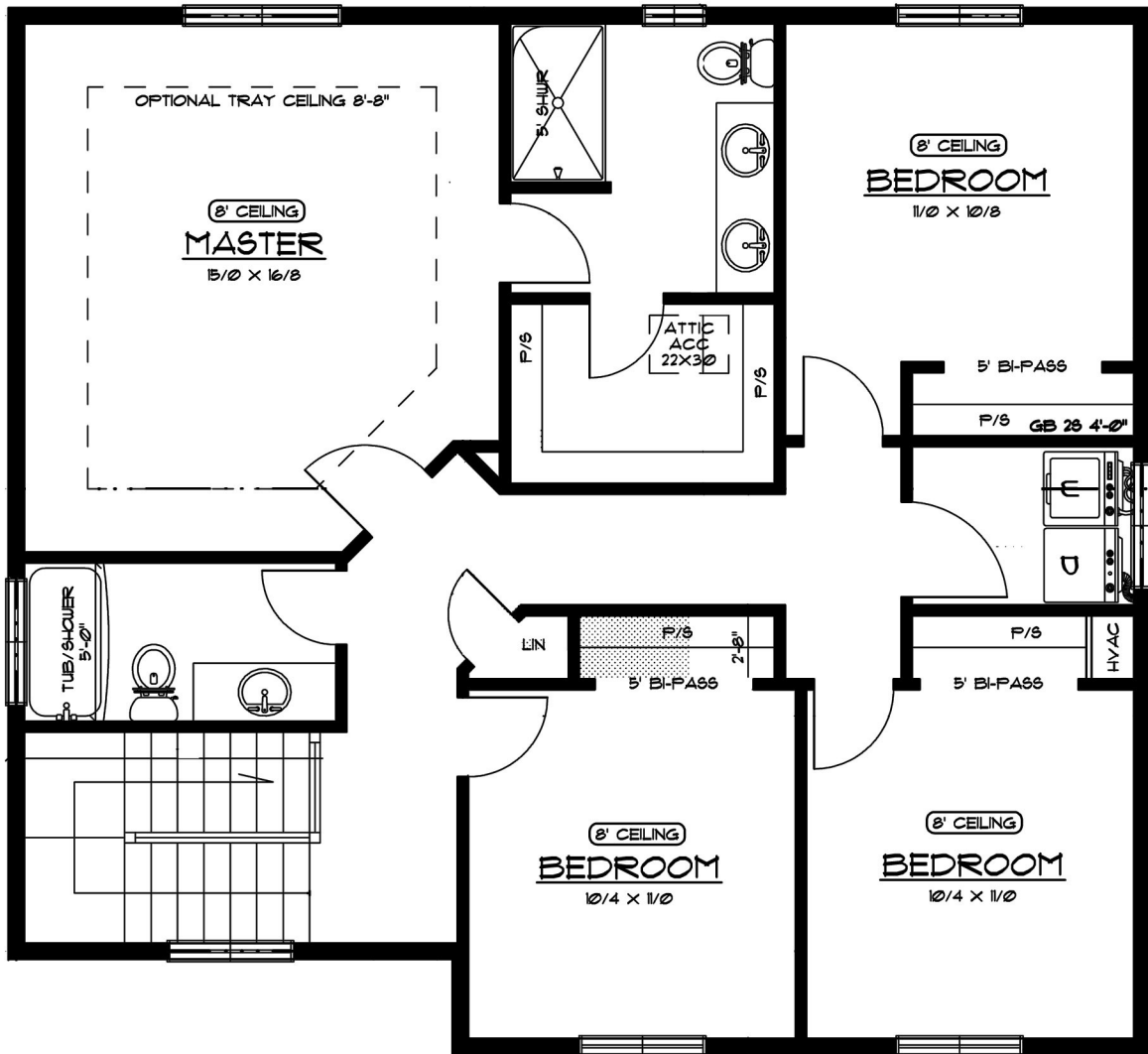
RENDERINGS, PLANS, SPECIFICATIONS, TERMS, CONDITIONS AND STATEMENTS CONTAINED IN THIS BROCHURE ARE PROPOSED ONLY. NW HOME-BUILDER GROUP RESERVES THE RIGHT TO MODIFY, REVISE OR WITHDRAW ANY OR ALL OF SAME IN ITS SOLE DISCRETION AND WITHOUT PRIOR NOTICE.





**NORTHWEST**  
HOME BUILDER GROUP

Lot 4 on 94th Ave  
2,624 sq ft  
1,876 + 748 sq ft



**2ND FLOOR PLAN**  
SCALE 1/4"=1'-0"

360-521-1973



[WWW.NWHOMEBUILDERGROUP.COM](http://WWW.NWHOMEBUILDERGROUP.COM)

RENDERINGS, PLANS, SPECIFICATIONS, TERMS, CONDITIONS AND STATEMENTS CONTAINED IN THIS BROCHURE ARE PROPOSED ONLY. NW HOME-BUILDER GROUP RESERVES THE RIGHT TO MODIFY, REVISE OR WITHDRAW ANY OR ALL OF SAME IN ITS SOLE DISCRETION AND WITHOUT PRIOR NOTICE.

