



**NORTHWEST**  
HOME BUILDER GROUP

**Lot 26 Stonewood ADU**  
**Total 2779 sq ft**  
**Primary 1985 + ADU 794**



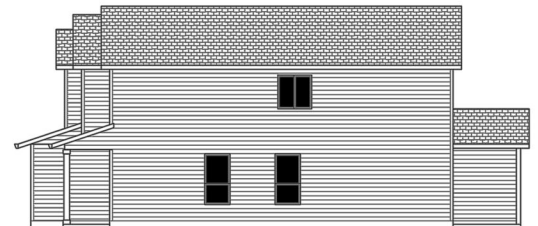
FRONT ELEVATION



LEFT SIDE ELEVATION



REAR ELEVATION



RIGHT SIDE ELEVATION

**360-521-1973**



[WWW.NWHOMEBUILDERGROUP.COM](http://WWW.NWHOMEBUILDERGROUP.COM)

RENDERINGS, PLANS, SPECIFICATIONS, TERMS, CONDITIONS AND STATEMENTS CONTAINED IN THIS BROCHURE ARE PROPOSED ONLY. NW HOME-BUILDER GROUP RESERVES THE RIGHT TO MODIFY, REVISE OR WITHDRAW ANY OR ALL OF SAME IN ITS SOLE DISCRETION AND WITHOUT PRIOR NOTICE.





**NORTHWEST**  
HOME BUILDER GROUP

**Lot 26 Stonewood ADU**  
**Total 2779 sq ft**  
**Primary 1985 + ADU 794**



**360-521-1973**



[WWW.NWHOMEBUILDERGROUP.COM](http://WWW.NWHOMEBUILDERGROUP.COM)

RENDERINGS, PLANS, SPECIFICATIONS, TERMS, CONDITIONS AND STATEMENTS CONTAINED IN THIS BROCHURE ARE PROPOSED ONLY. NW HOME-BUILDER GROUP RESERVES THE RIGHT TO MODIFY, REVISE OR WITHDRAW ANY OR ALL OF SAME IN ITS SOLE DISCRETION AND WITHOUT PRIOR NOTICE.





**NORTHWEST**  
HOME BUILDER GROUP

**Lot 26 Stonewood ADU**  
**Total 2779 sq ft**  
**Primary 1985 + ADU 794**



**2ND FLOOR PLAN**  
SCALE 1/4"=1'-0"

**360-521-1973**



[WWW.NWHOMEBUILDERGROUP.COM](http://WWW.NWHOMEBUILDERGROUP.COM)

RENDERINGS, PLANS, SPECIFICATIONS, TERMS, CONDITIONS AND STATEMENTS CONTAINED IN THIS BROCHURE ARE PROPOSED ONLY. NW HOME-BUILDER GROUP RESERVES THE RIGHT TO MODIFY, REVISE OR WITHDRAW ANY OR ALL OF SAME IN ITS SOLE DISCRETION AND WITHOUT PRIOR NOTICE.

