



**NORTHWEST**  
HOME BUILDER GROUP

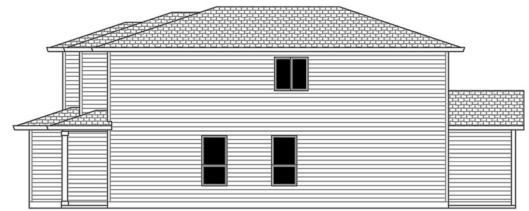
**Lot 2 Stonewood ADU**  
**Total 2779 sq ft**  
**Primary 1985 + ADU 794**



LEFT SIDE ELEVATION  
SCALE 1/8"=1'-0"



REAR ELEVATION  
SCALE 1/8"=1'-0"



RIGHT SIDE ELEVATION  
SCALE 1/8"=1'-0"

**360-521-1973**



[WWW.NWHOMEBUILDERGROUP.COM](http://WWW.NWHOMEBUILDERGROUP.COM)

RENDERINGS, PLANS, SPECIFICATIONS, TERMS, CONDITIONS AND STATEMENTS CONTAINED IN THIS BROCHURE ARE PROPOSED ONLY. NW HOME-BUILDER GROUP RESERVES THE RIGHT TO MODIFY, REVISE OR WITHDRAW ANY OR ALL OF SAME IN ITS SOLE DISCRETION AND WITHOUT PRIOR NOTICE.





**NORTHWEST**  
HOME BUILDER GROUP

**Lot 2 Stonewood ADU**  
**Total 2779 sq ft**  
**Primary 1985 + ADU 794**



**360-521-1973**



[WWW.NWHOMEBUILDERGROUP.COM](http://WWW.NWHOMEBUILDERGROUP.COM)

RENDERINGS, PLANS, SPECIFICATIONS, TERMS, CONDITIONS AND STATEMENTS CONTAINED IN THIS BROCHURE ARE PROPOSED ONLY. NW HOME-BUILDER GROUP RESERVES THE RIGHT TO MODIFY, REVISE OR WITHDRAW ANY OR ALL OF SAME IN ITS SOLE DISCRETION AND WITHOUT PRIOR NOTICE.





**NORTHWEST**  
HOME BUILDER GROUP

**Lot 2 Stonewood ADU**  
**Total 2779 sq ft**  
**Primary 1985 + ADU 794**



**360-521-1973**



[WWW.NWHOMEBUILDERGROUP.COM](http://WWW.NWHOMEBUILDERGROUP.COM)

RENDERINGS, PLANS, SPECIFICATIONS, TERMS, CONDITIONS AND STATEMENTS CONTAINED IN THIS BROCHURE ARE PROPOSED ONLY. NW HOME-BUILDER GROUP RESERVES THE RIGHT TO MODIFY, REVISE OR WITHDRAW ANY OR ALL OF SAME IN ITS SOLE DISCRETION AND WITHOUT PRIOR NOTICE.

