



**NORTHWEST**  
HOME BUILDER GROUP

**Lot 12 KKWZ ADU**  
**Total 2,809 sq ft**  
**Primary 2,021 + 788 ADU**



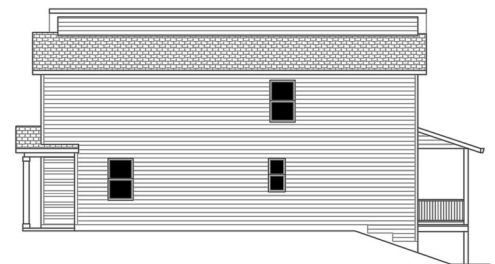
FRONT ELEVATION



LEFT SIDE ELEVATION



REAR ELEVATION



RIGHT SIDE ELEVATION

**360-521-1973**



[WWW.NWHOMEBUILDERGROUP.COM](http://WWW.NWHOMEBUILDERGROUP.COM)

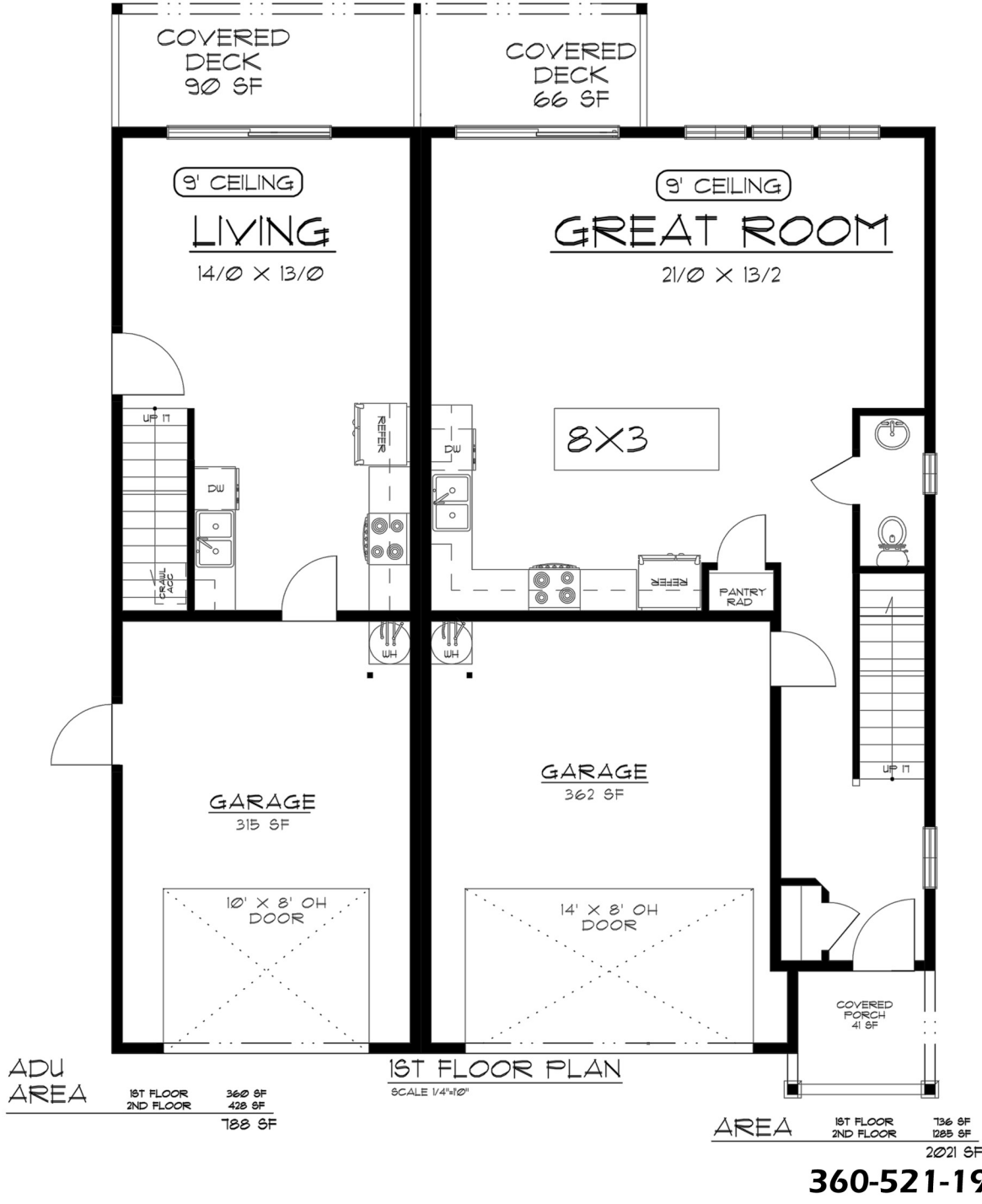
RENDERINGS, PLANS, SPECIFICATIONS, TERMS, CONDITIONS AND STATEMENTS CONTAINED IN THIS BROCHURE ARE PROPOSED ONLY. NW HOME-BUILDER GROUP RESERVES THE RIGHT TO MODIFY, REVISE OR WITHDRAW ANY OR ALL OF SAME IN ITS SOLE DISCRETION AND WITHOUT PRIOR NOTICE.





**NORTHWEST**  
HOME BUILDER GROUP

**Lot 12 KKWZ ADU**  
**Total 2,809 sq ft**  
**Primary 2,021 + 788 ADU**



**360-521-1973**

[WWW.NWHOMEBUILDERGROUP.COM](http://WWW.NWHOMEBUILDERGROUP.COM)

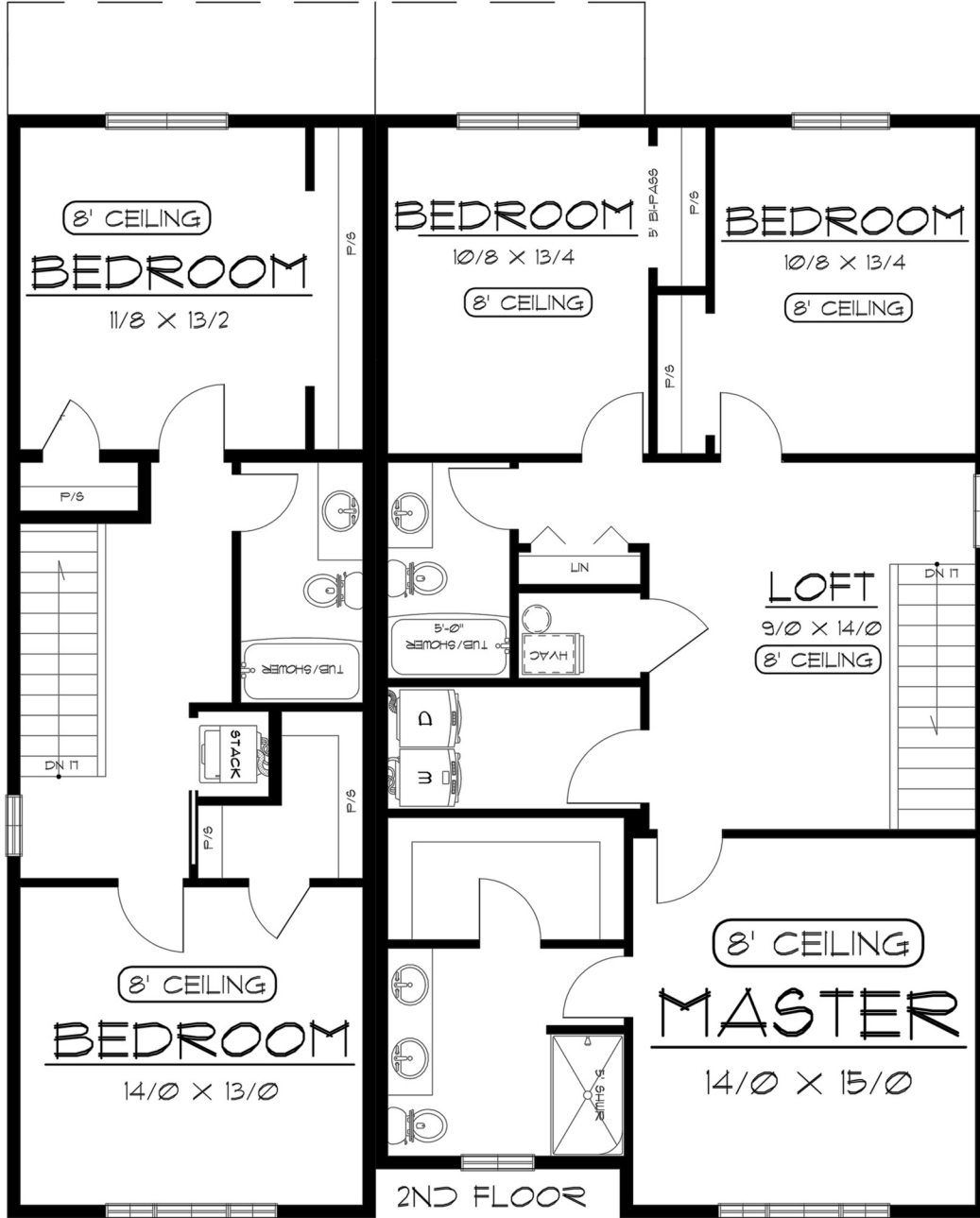
RENDERINGS, PLANS, SPECIFICATIONS, TERMS, CONDITIONS AND STATEMENTS CONTAINED IN THIS BROCHURE ARE PROPOSED ONLY. NW HOME-BUILDER GROUP RESERVES THE RIGHT TO MODIFY, REVISE OR WITHDRAW ANY OR ALL OF SAME IN ITS SOLE DISCRETION AND WITHOUT PRIOR NOTICE.





**NORTHWEST**  
HOME BUILDER GROUP

Lot 12 KKWZ ADU  
Total 2,809 sq ft  
Primary 2,021 + 788 ADU



360-521-1973



[WWW.NWHOMEBUILDERGROUP.COM](http://WWW.NWHOMEBUILDERGROUP.COM)

RENDERINGS, PLANS, SPECIFICATIONS, TERMS, CONDITIONS AND STATEMENTS CONTAINED IN THIS BROCHURE ARE PROPOSED ONLY. NW HOME-BUILDER GROUP RESERVES THE RIGHT TO MODIFY, REVISE OR WITHDRAW ANY OR ALL OF SAME IN ITS SOLE DISCRETION AND WITHOUT PRIOR NOTICE.

