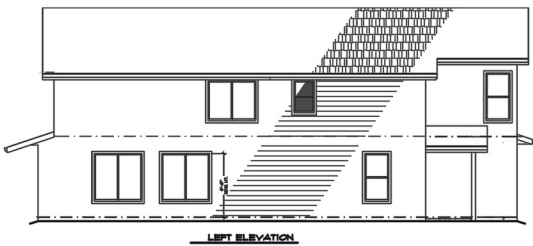




NORTHWEST
HOME BUILDER GROUP

49th with ADU
1,812 + 505 sq ft



LEFT ELEVATION



REAR ELEVATION



RIGHT ELEVATION

360-521-1973



WWW.NWHOMEBUILDERGROUP.COM

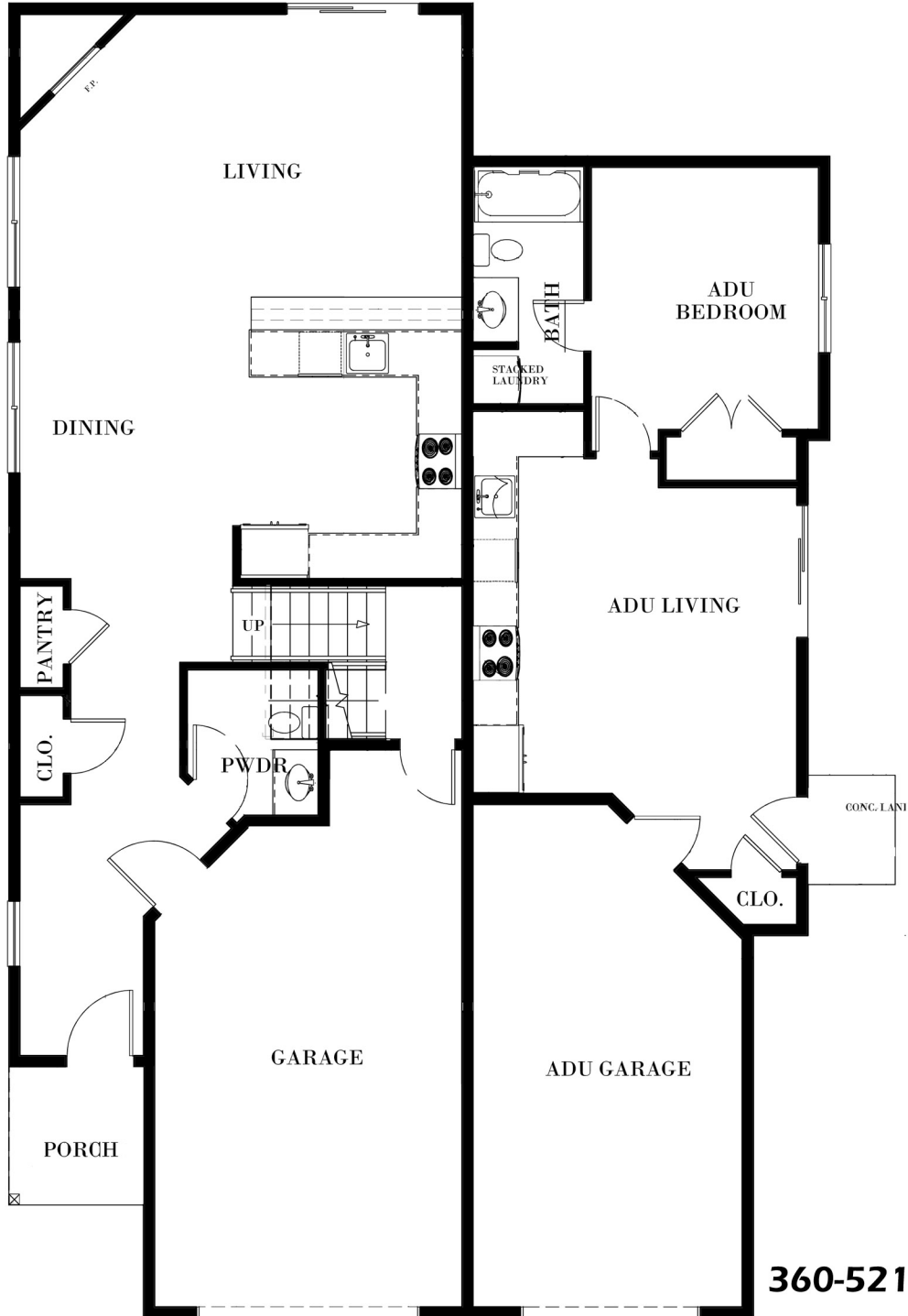
RENDERINGS, PLANS, SPECIFICATIONS, TERMS, CONDITIONS AND STATEMENTS CONTAINED IN THIS BROCHURE ARE PROPOSED ONLY. NW HOME-BUILDER GROUP RESERVES THE RIGHT TO MODIFY, REVISE OR WITHDRAW ANY OR ALL OF SAME IN ITS SOLE DISCRETION AND WITHOUT PRIOR NOTICE.





NORTHWEST
HOME BUILDER GROUP

49th with ADU
1,812 + 505 sq ft



360-521-1973



WWW.NWHOMEBUILDERGROUP.COM

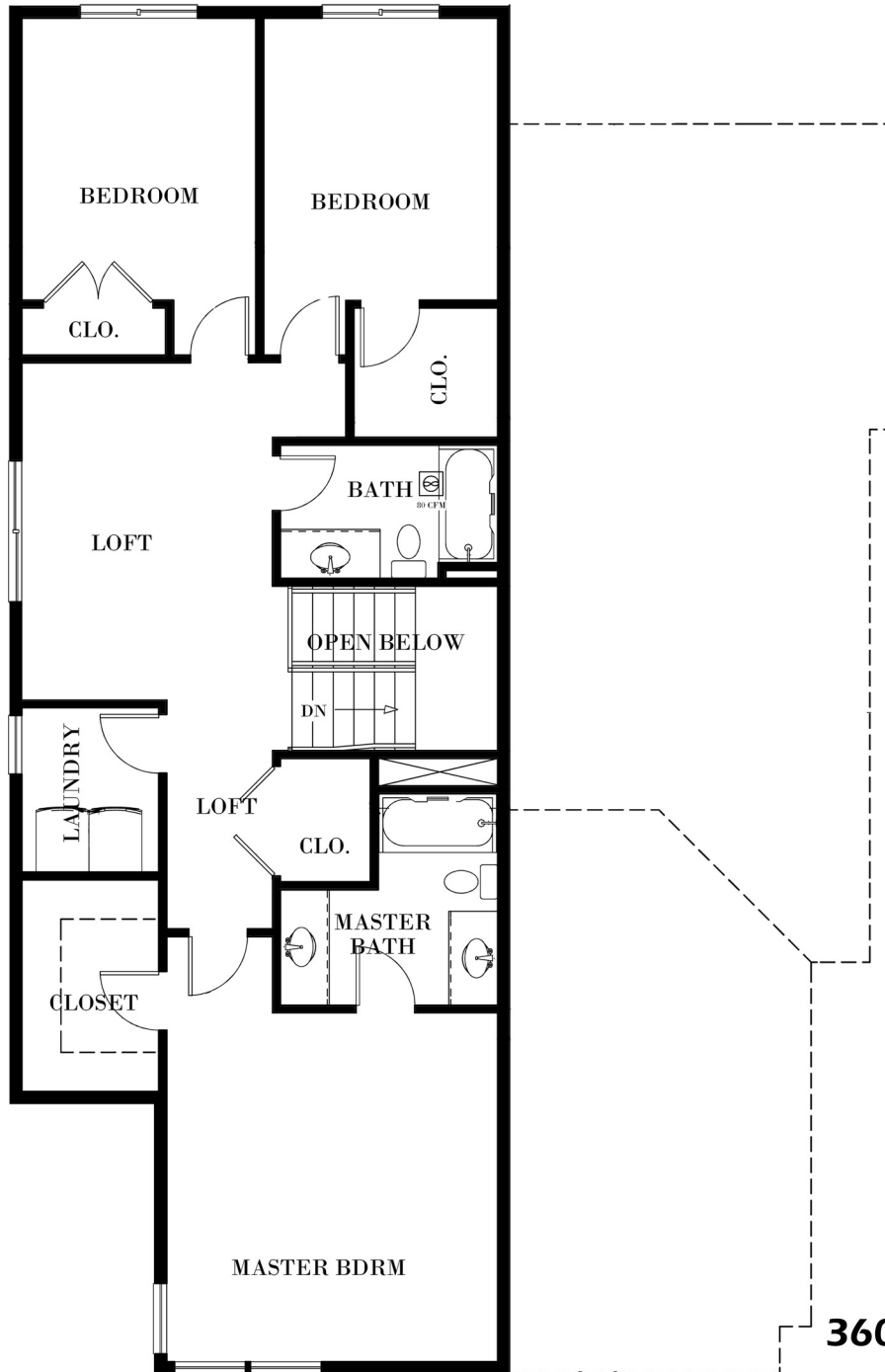
RENDERINGS, PLANS, SPECIFICATIONS, TERMS, CONDITIONS AND STATEMENTS CONTAINED IN THIS BROCHURE ARE PROPOSED ONLY. NW HOME-BUILDER GROUP RESERVES THE RIGHT TO MODIFY, REVISE OR WITHDRAW ANY OR ALL OF SAME IN ITS SOLE DISCRETION AND WITHOUT PRIOR NOTICE.





NORTHWEST
HOME BUILDER GROUP

49th with ADU
1,812 + 505 sq ft



360-521-1973



WWW.NWHOMEBUILDERGROUP.COM

RENDERINGS, PLANS, SPECIFICATIONS, TERMS, CONDITIONS AND STATEMENTS CONTAINED IN THIS BROCHURE ARE PROPOSED ONLY. NW HOME-BUILDER GROUP RESERVES THE RIGHT TO MODIFY, REVISE OR WITHDRAW ANY OR ALL OF SAME IN ITS SOLE DISCRETION AND WITHOUT PRIOR NOTICE.

