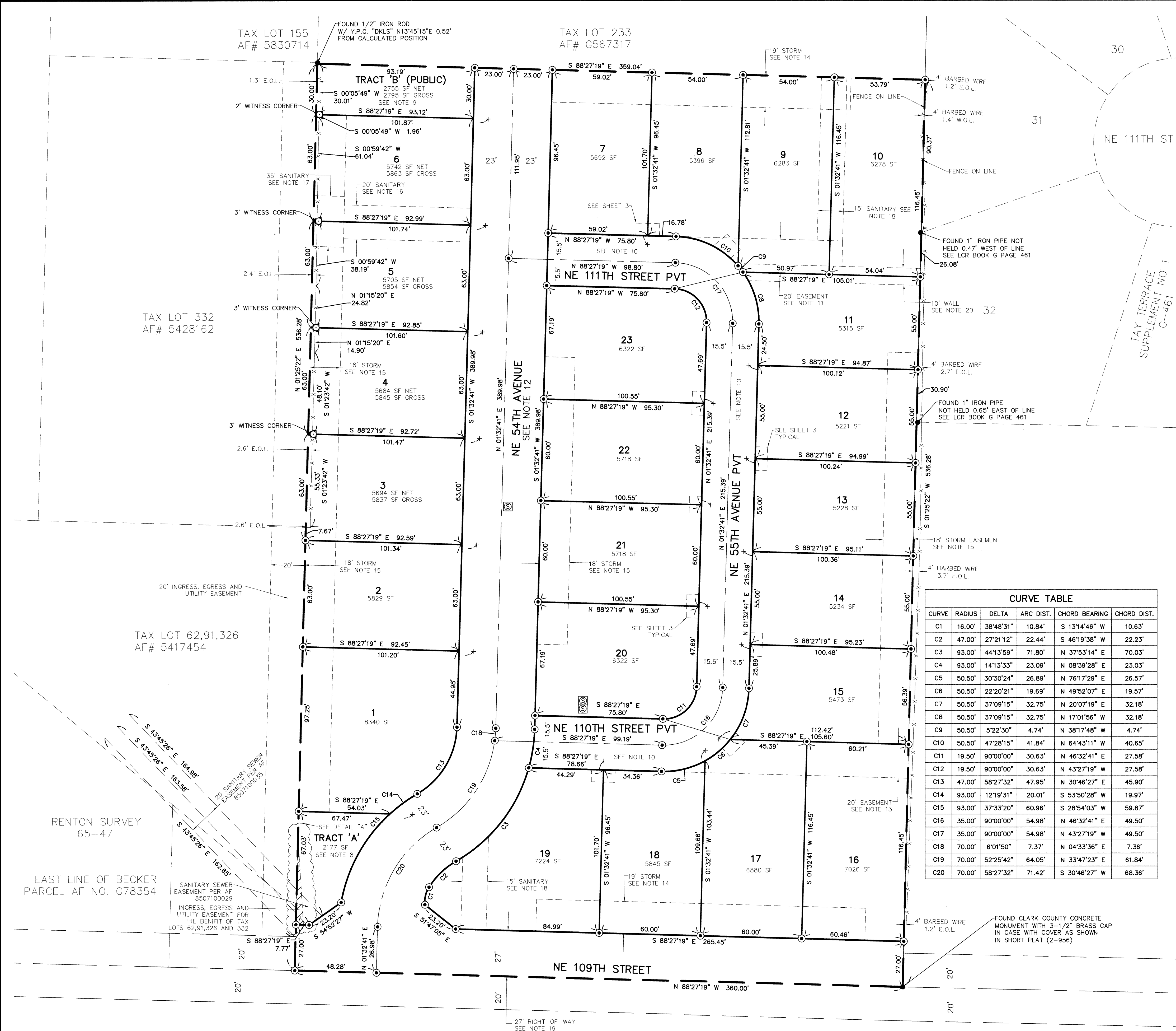


NORTHMOR HEIGHTS SUBDIVISION

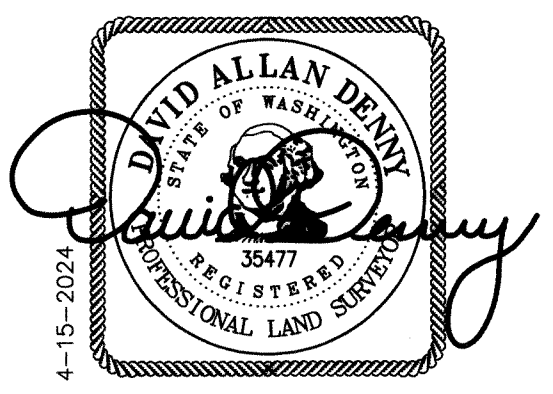
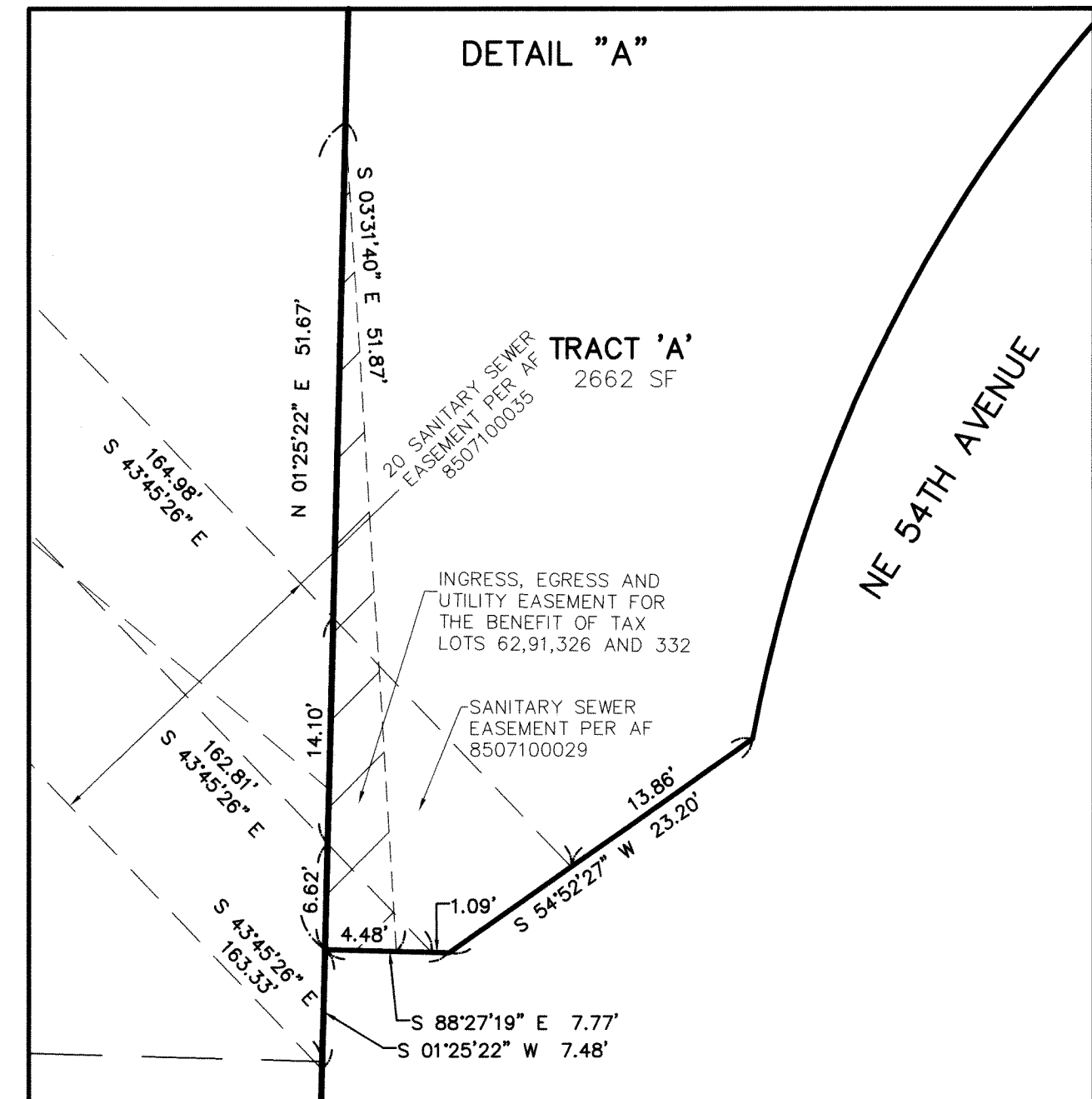
PRELIMINARILY APPROVED AS NE 109TH STREET SUBDIVISION LOCATED IN A PORTION OF THE SW 1/4 OF THE NW 1/4 OF SECTION 31
T. 3 N., R 2 E., W. M., CLARK COUNTY, WASHINGTON SHEET 2 OF 3

- LEGEND:**
- AF INDICATES AUDITOR'S FILE NUMBER
 - SF INDICATES SQUARE FEET
 - N.O.L. INDICATES NORTH OF LINE
 - E.O.L. INDICATES EAST OF LINE
 - S.O.L. INDICATES SOUTH OF LINE
 - W.O.L. INDICATES WEST OF LINE
 - Y.P.C. INDICATES YELLOW PLASTIC CAP
 - L.C.R. INDICATES LAND CORNER RECORD
 - PVT INDICATES PRIVATE
 - C INDICATES RIGHT OF WAY CENTERLINE
 - INDICATES MONUMENT FOUND AS NOTED
 - INDICATES CALCULATED POSITION NOT SET
 - ⊙ INDICATES 1/2" x 24" REBAR WITH YELLOW PLASTIC CAP INSCRIBED "D.DENNY 35477", SET DECEMBER 2023
 - + INDICATES ROCK NAIL WITH BRASS WASHER INSCRIBED "35477" SET IN CURB ON A PROJECTION OF THE LOT LINE, SET OCTOBER 2023
 - ⊞ INDICATES ABANDON SEPTIC SYSTEM
 - INDICATES BOUNDARY
 - x-x- INDICATES FENCE LINE
 - o-o- INDICATES CHAINLINK FENCE LINE
 - INDICATES WOOD FENCE LINE
 - - - INDICATES EASEMENT
 - - - INDICATES PROPERTY ADJACENT
 - ⊞ INDICATES WITNESS CORNER SET ON LINE

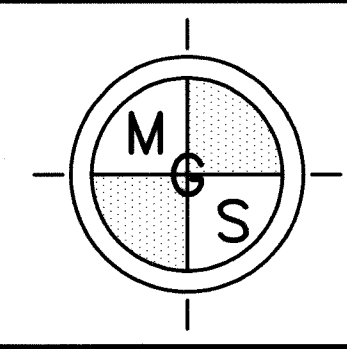


CURVE TABLE

CURVE	RADIUS	DELTA	ARC DIST.	CHORD BEARING	CHORD DIST.
C1	16.00'	38°48'31"	10.84'	S 13°14'46" W	10.63'
C2	47.00'	27°21'12"	22.44'	S 46°19'38" W	22.23'
C3	93.00'	44°13'59"	71.80'	N 37°53'14" E	70.03'
C4	93.00'	14°13'33"	23.09'	N 08°39'28" E	23.03'
C5	50.50'	30°30'24"	26.89'	N 76°17'29" E	26.57'
C6	50.50'	22°20'21"	19.69'	N 49°52'07" E	19.57'
C7	50.50'	37°09'15"	32.75'	N 20°07'19" E	32.18'
C8	50.50'	37°09'15"	32.75'	N 17°01'56" W	32.18'
C9	50.50'	5°22'30"	4.74'	N 38°17'48" W	4.74'
C10	50.50'	47°28'15"	41.84'	N 64°43'11" W	40.65'
C11	19.50'	90°00'00"	30.63'	N 46°32'41" E	27.58'
C12	19.50'	90°00'00"	30.63'	N 43°27'19" W	27.58'
C13	47.00'	58°27'32"	47.95'	N 30°46'27" E	45.90'
C14	93.00'	12°19'31"	20.01'	S 53°50'28" W	19.97'
C15	93.00'	37°33'20"	60.96'	S 28°54'03" W	59.87'
C16	35.00'	90°00'00"	54.98'	N 46°32'41" E	49.50'
C17	35.00'	90°00'00"	54.98'	N 43°27'19" W	49.50'
C18	70.00'	6°01'50"	7.37'	N 04°33'36" E	7.36'
C19	70.00'	52°25'42"	64.05'	N 33°47'23" E	61.84'
C20	70.00'	58°27'32"	71.42'	S 30°46'27" W	68.36'



SCALE 1" = 30'
30 15 0 30 45 60



MINISTER-GLAESER SURVEYING INC.
2200 E. EVERGREEN BLVD.
VANCOUVER, WA 98661
(360) 694-3313

SCALE: 1"=30'
JOB NO. 21-296
DATE: 4-15-24
CALC BY: DAD
DRAWN BY: AAD
CHECKED BY: DAD
SHEET 2 OF 3

MINISTER AND GLAESER SURVEYING, INC. MAKES NO WARRANTIES AS TO MATTERS OF UNWRITTEN TITLE SUCH AS ADVERSE POSSESSION, ACQUIESCENCE, ESTOPPLE, ETC.
A FIELD TRAVERSE WAS PERFORMED USING A THREE SECOND TOTAL STATION. THE FIELD TRAVERSE MET THE MINIMUM STANDARDS FOR SURVEYS AS DESIGNATED IN WAC 332-130-090. ALL CORNERS NOTED AS FOUND WERE VISITED ON 06-04-21.